

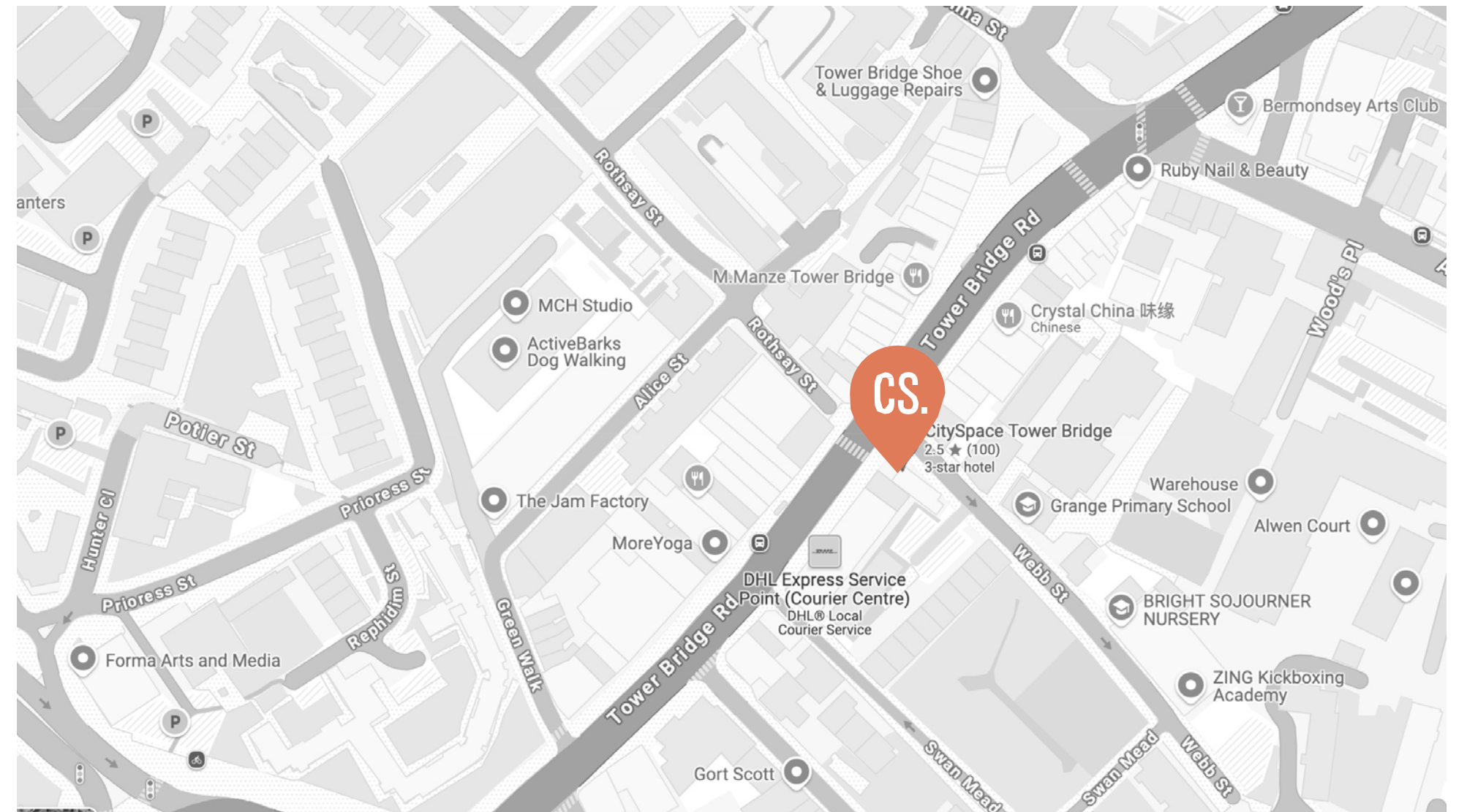
CitySpace.

TOWER BRIDGE, LONDON, SE14TR

CITYSPACE

TOWER BRIDGE

Located just a 10-minute walk from London Bridge station, CitySpace Tower Bridge offers a blend of period and modern architecture. The building formely known as "The Pagoda", a historic gin distillery turned into a flexible workspace and 26 bedrooms.



CITYSPACE

TOWER BRIDGE

A TOTAL of 924 sq ft,
including a OPEN PLAN on
ground floor flooded in natural daylight.

MEETING space
113 SQ ft which could also be
a private office adaptable to
size requirements.

Private ENTRANCE on TOWER
BRIDGE ROAD with pin code
access.

With WIFI, utilities and business
rates included in lease.

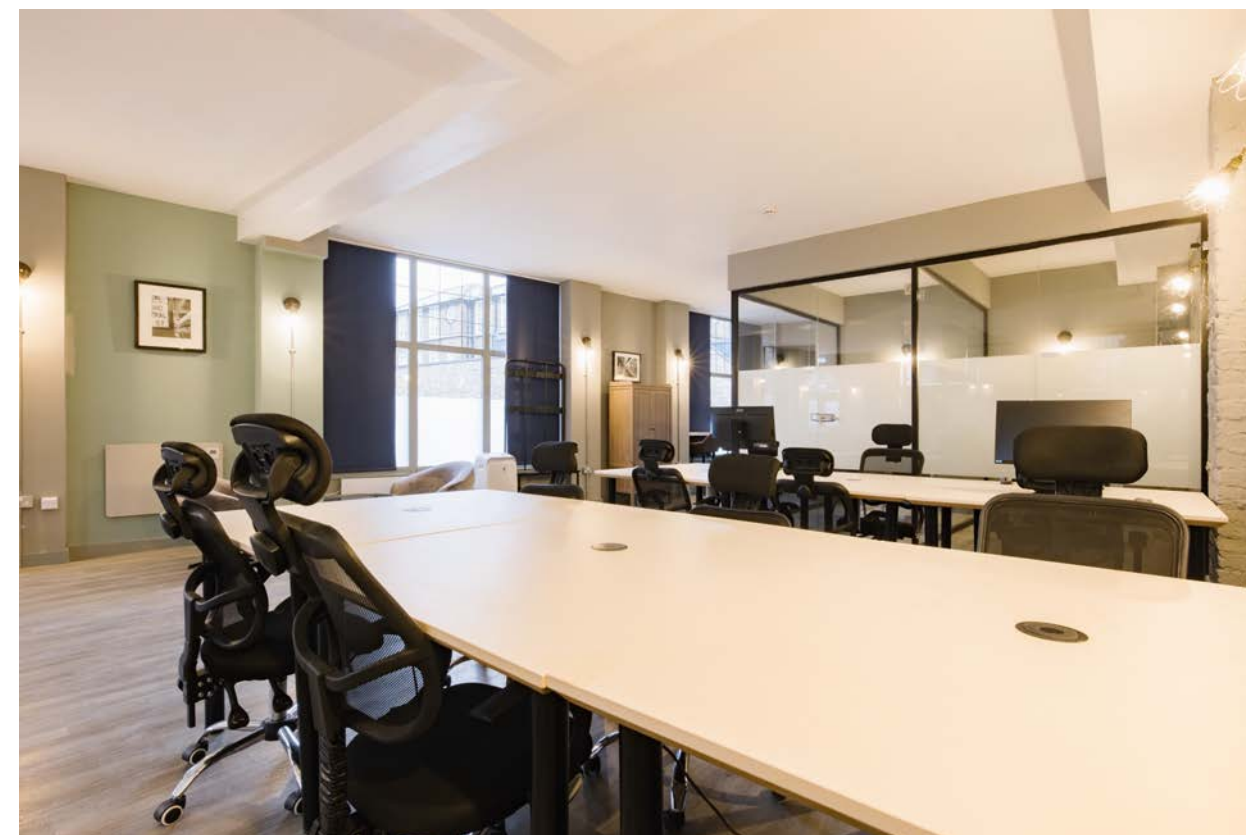


CITYSPACE
TOWER BRIDGE

KITCHENETTE with Coffee machine, microwave and fridge .

TWO quiet noise cancelling cabins for privacy calls or private office spaces.

CitySpace TOWER BRIDGE has a dedicated broadband fibre line with HIGH SPEEDS of up to 100mbs available.



CITYSPACE
TOWER BRIDGE

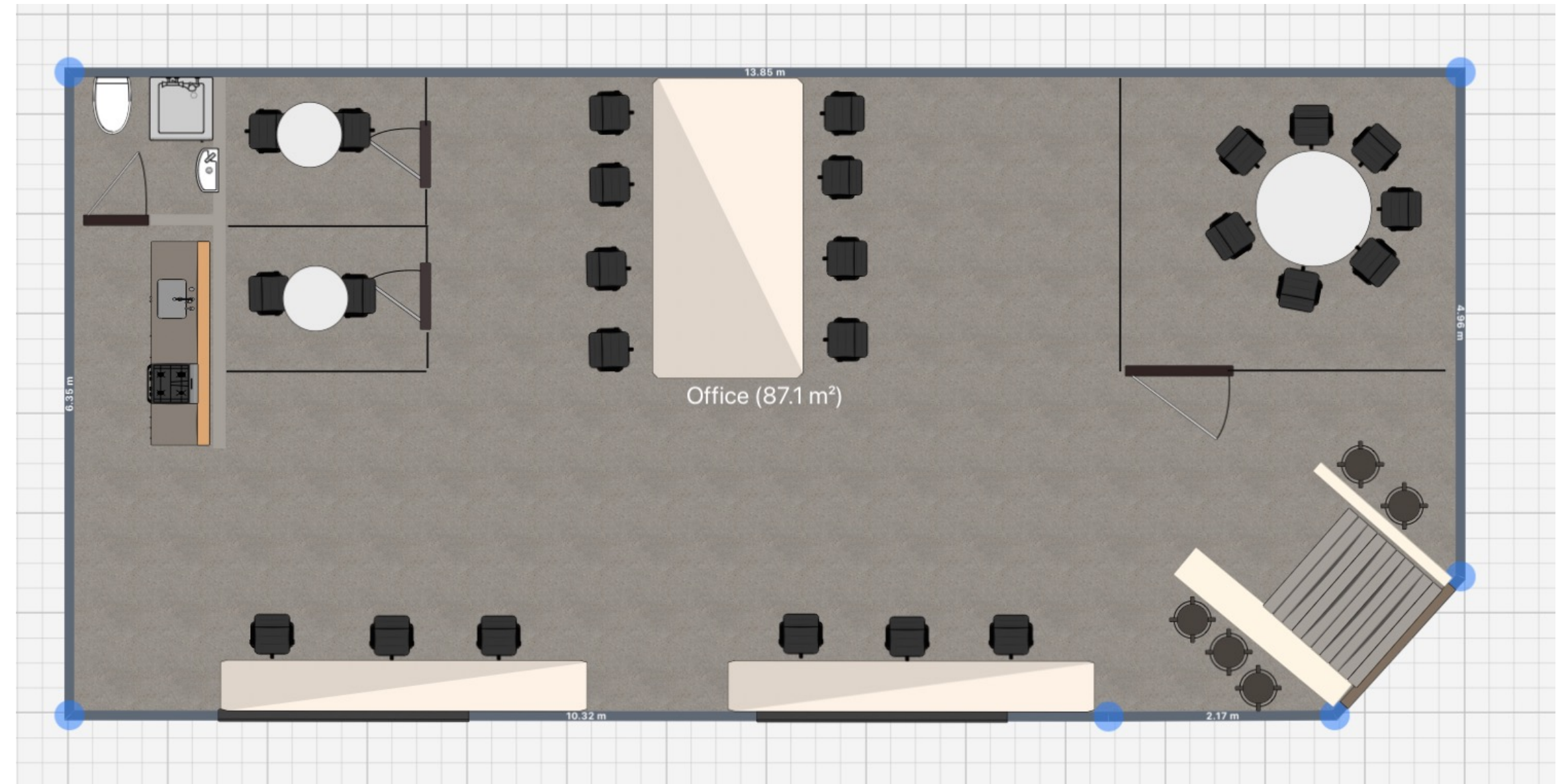
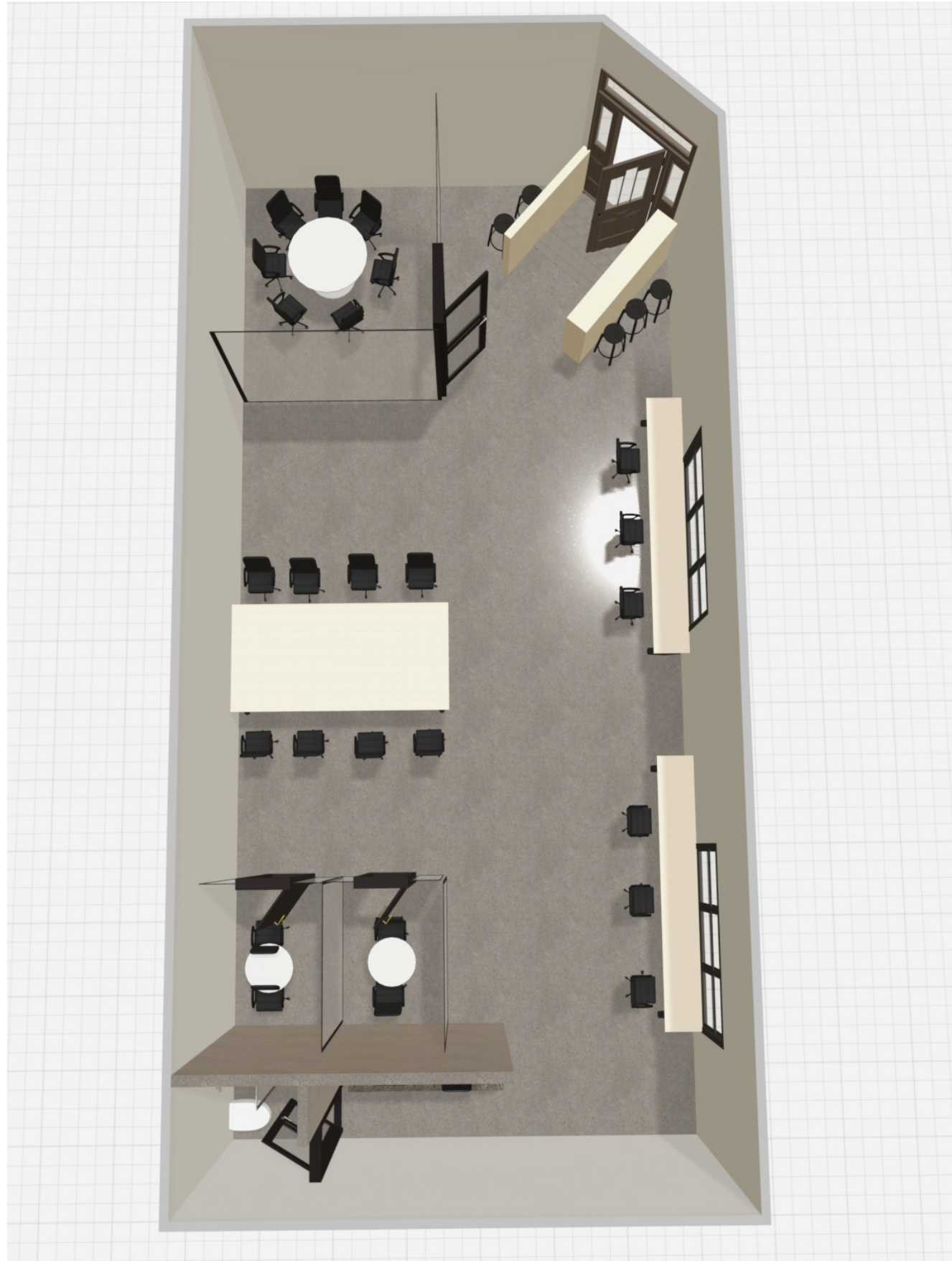


SHOWER ROOM and unisex
toilet facilities

DAILY SERVICING
By CITYSPACE housekeeping
team

MEMBER DISCOUNTS to all
CITYSPACE locations

CITYSPACE
TOWER BRIDGE



Current layout 924 sqft total
Meeting room 113 sqft
Private Office/ Booths x 2 – 50 sq ft each

ADDITIONAL LAYOUTS POSSIBLE

HOTEL

TOWER BRIDGE

A SOPHISTICATED
boutique space designed with
CONSIDERATION and
CHARACTER

DOUBLES, TWINS available for
those short but INSPIRED trips
where focus is on EXPLORING the
city.

STUDIOS &, FAMILY ROOMS,
rooms for those longer stays where
SPACE, CONVENIENCE
and COMFORT are key.



*Prices from £80 per night. (Rates fluctuate daily)

LOCATION

TOWER BRIDGE

The TOWER BRIDGE area offers more than just proximity to iconic landmarks.

It's a convenient and lively part of London filled with HISTORY, CULTURE and excellent transport links.

Whether you need a PRODUCTIVE SPACE to grow your team or a vibrant neighbourhood to impress clients, 64 Tower Bridge Road is the perfect spot to establish your business.



CITYSPACE

TOWER BRIDGE

A total solution for travel & work
life BALANCE.

ONE Location that offers
ACCOMMODATION & OFFICE
SPACE.

Benefit from further discount when
booking ANY CitySpace locations as a
member.



